



Queen Margaret University
EDINBURGH

Shaping a better world through education, research and innovation - enabling individuals and communities to flourish.

We are distinctive in our person-centred approach to education and teaching, and our commitment to shaping a better world. We treat our students as individuals and we aim to offer them the optimum balance of theoretical and practical learning. Renowned for immediately relevant research and innovation, we have widely recognised expertise in business, the creative industries, education, health and rehabilitation, and social sciences.

National Student Survey 2020

Top

in Scotland and joint top in the UK for student satisfaction in **Nursing**



Acting for Stage and Screen

100% satisfaction

in the Top 2

in Scotland for student satisfaction in **Tourism, Transport and Travel** (includes QMU's International Hospitality and Tourism Management, Events Management, and Public Relations, Marketing and Events courses)



97% satisfaction

in the Top 2

in the UK for student satisfaction in **Healthcare Science** (Hearing Aid Audiology)



96% satisfaction

International Hospitality & Tourism Management

Ranked in the top 68% of universities worldwide



in the QS World University Rankings 2021

Age of students

37.9% are below 21 years

22.1% are 30 years and over



Undergraduate leavers in employment or further study

97.1%



94.6%



HE sector average



3rd in Scotland for employment of undergraduate leavers

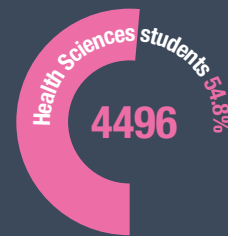
* Source: HESA 2018

Student numbers (2018-2019: including overseas collaborations)



82022

Total number of students



3000 QMU students are studying for a QMU degree through our overseas collaborations



QMU staff (as of December 2019)

249 Academic



222 Professional Services



Female **66%**

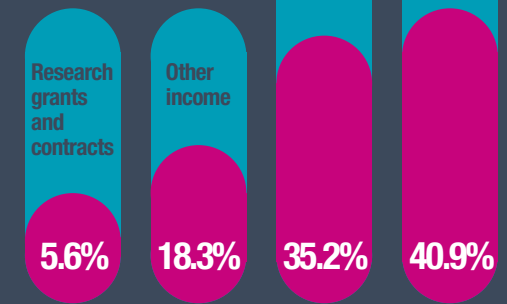
Male **34%**

Income (2018-2019)

£39.5m

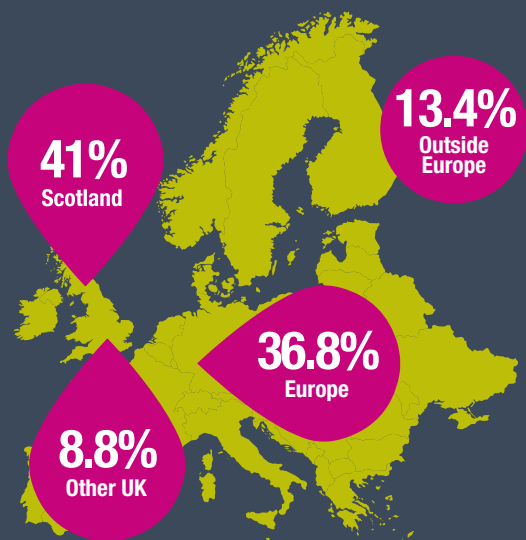


Sources of income (2018-2019)



Student distribution by origin (2018-2019)

QMU students come from **over 90** countries



40+

graduate start-ups created through our Business Innovation Zone



1st Scottish university to host a Business Gateway on campus

Research excellence*

* REF 2014

92% of our research in **Speech and Language** is classed as internationally excellent or world leading



50%+ of our research profile in **Global Health and Development** is classed as internationally excellent or world leading



77%+ of our research publications in **Media and Communications** are classed as internationally excellent or world leading



40%+ of our research publications in **Allied Health** are classed as internationally excellent or world leading



6 research centres and **3** knowledge exchange centres

Flagships

Health and rehabilitation **Creativity and culture** **Sustainable business**